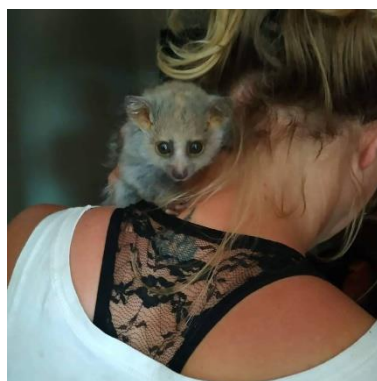

Project Wild

Project Wild is a wildlife rescue and rehabilitation centre based at the foot of the stunning Hlumu Hlumu Mountains in the Mpumalanga region of South Africa. This is the only primate rehabilitation in the province, and as such their work focuses mainly on vervet monkeys. The majority of these monkeys come in as tiny babies after their mothers have been shot, poisoned or hit by cars or killed so that people can raise the baby as a pet. They also take in any other wildlife that needs to be rescued and to date have successfully worked with mongoose, many antelope and bird species, warthog, bushpigs, bushbabies, small predators and reptiles. Project Wild is a non-profit organisation and, with no government support, relies solely on the donations from volunteers to continue its vital work. Without the volunteers, Project Wild would not exist and the many animals they take in each year would not have a future. They take in injured, orphaned and displaced wildlife with the aim of rehabilitation and release back into protected areas of the wild. They also take in any unwanted exotic pets and give them a home in the most natural conditions possible. Each species requires a different approach to rehabilitation and you will be involved in many different processes including troop bonding for social animals and re-wilding for solitary animals. The final aim is always to release any animal back into the wild wherever possible. This involves finding a suitable site, ensuring the animal is in the best condition to survive and securing the necessary paperwork. Only through education can we change the mindset of the public with regards to wildlife.



Project Wild was founded in 2010 to address the growing need for a rehabilitation centre in Mpumalanga. From the first duiker they took in in 2010, the centre has grown exponentially and now houses around 100 animals. These are mainly vervet monkey troops that are going through the 3 year rehabilitation process but they also have, or have had, baboons, mongoose, predators, birds and antelope.

Releases: Their main aim for any animal at the centre is release. They are not a zoo and do not keep animals for the purpose of volunteers to 'pet'. Wherever possible they release animals as soon as they are ready.



This is dependent on the season and the requirements of the animal. Since Project Wild was founded they have successfully released 5 troops of monkeys (the rehabilitation period for each troop is 3 years!), servals, mongoose troops, numerous antelope and bird species, several warthog and bushpig, porcupine, honey badger and a pole cat. They have helped with relocation of animals that have been trapped in city areas or actually within shops at times! They have acquired the first primate permit in the province of Mpumalanga.

Before Project Wild was started, all primates that were rescued and taken to vets in the province were euthanized. They have done various outreach programs with local schools to try and educate children about wildlife and how to respect it. Why they Need You Despite our progress, the lack of vital funds and government support mean that the day to day funding of such a project is a real struggle. Volunteers are the back bone of Project Wild and without both the donations from



the volunteers and the work the volunteers put in on the ground, they would not be able to continue to help the animals they do. Project wild would love to welcome you, to let Africa get under your skin and to give you an experience you will never forget. You can be the change you want to see in the world.



A Positive Attitude, Willingness to Help and Learn, and a Sense of Humour are Essential. Volunteers Should Expect to be Dirty and Exhausted at the End of the Day! Volunteers are essential for the success of this project and are required for every aspect of the day to day running of the project. There is no typical day and although many of the jobs are a daily necessity such as feeding and cleaning, there is always a new experience or job that needs doing. Project Wild will ensure you will get involved and have fun while learning new skills, meeting new people and experiencing a new way of life all while

making a huge difference to wildlife conservation.

While you are a volunteer, you will be treated as a professional member of the team and it is important that you use your initiative and listen and learn. By all working together as a team we can achieve big things for the animals in our care. Please make sure that you complete any tasks to the best of your ability to ensure the smooth running of the centre as a whole. Working hours are normally 7am - 5pm but



this is dependent on animal emergencies. Please remember the animals come first and plans for volunteers (such as days off or meal times) may be delayed if an emergency occurs and need your help. Please remember that this is a serious conservation project and the hours may be long and demanding. **Working with the baby monkeys in the nursery is a daily job during baby season (November - May). We need to recreate the family that has been cruelly taken away from them by humans.**

Examples of some of the jobs you may be involved in:

- Daily feeding routines and sorting of new food deliveries
- Hand raising and bottle feeding of orphans
- Working in the baby monkey nursery (Nov-May) to supervise and ensure they are playing, sleeping, feeding etc.
- Cleaning, cleaning, cleaning!! We need to ensure all the enclosures and work areas are kept clean to avoid any infections.
- Helping to administer medicines
- Construction projects - helping to build enclosures, fixing fences, taking down old fences, painting, fixing, maintenance, laying pipes etc.
- Taking part in animal rescues or releases
- Land maintenance such as alien tree removal or burning fire breaks
- Enrichment projects



AM I REALLY MAKING A DIFFERENCE? Rest Assured: By making your volunteer donation you have already made a huge difference. The volunteer program funds the majority of the day to day expenses of the project. Feeding and caring for up to 100 animals is a costly exercise. As a volunteer at Project Wild you are an essential team member and part of the work force.

Unlike many projects They rely heavily on the volunteers and the work you carry out on site is vital for the day to day running of the centre.



What will I learn? We hope you will learn a lot about wildlife conservation and animal husbandry.

We will teach you about:

- Rehabilitation - the process and challenges involved
- Releases - how we choose sites and the process we go through to do a release
- Enrichment projects
- How to effectively and efficiently clean and maintain enclosures.
- The challenges involved in running a rehab centre
- Animal behaviour



- How to be resourceful - there is a saying here in Africa - A farmer makes a plan – they can't just nip out to the shops if they need something they have to use



what they have lying around. Baby Monkey Season is a busy time at the project and is a very hand's on time of year. These babies come in as helpless, traumatised individuals and it is up to you to provide them with hands on nurturing in the form of physical and emotional development. The babies are supervised by volunteers all day in the nursery and will sometime have to sleep with them at night. The experience there isn't all about cuddling baby animals. There will be incredible life changing experiences when you get to work hands on with the animals at the centre. However there is also hard work to be done such as sorting fruit and cleaning

cages and these are all essential jobs to keep the centre running. Many of the animals have a long rehabilitation period and can only be released when they are adults. It's important that we still give these adults proper care and enrichment even when they aren't 'cute' babies anymore. They love for volunteers to be involved in all stages of the rehabilitation journey. The rehabilitation process for primates is very long and at any one time we might have 3 troops going through the stages to be released. Although they have no hands on contact with these primates they still need care such as feeding, deworming and enrichment. They collect grasses and seeds daily for these troops and also make enrichment toys for them. Wild isn't just about working hands on with the animals. they try to tailor all work to each



individuals physical abilities. If there are certain jobs you would prefer to do or have a certain interest in then please let us know.

Extra Jobs • Cleaning, sorting and feeding the mealworms • The weekly food shop • Food collection • Sorting food donations • Gardening - they have a vegetable garden they are trying to get going to help them become more self-sufficient. • Helping with fundraising ideas • Helping in the office • Helping with educational tours • General site clean ups

Accommodation:

Volunteers stay in shared accommodation either in individual wooden chalets or in the volunteer house. There are a maximum of 3 people to a room with a shared bathroom/ living room and kitchen facilities. They provide all bed linen and towels and 1 of our housekeeping staff will clean the chalet twice a week.



Project Wild is not based in a malaria area so you will not need malaria tablets while with them. If you are planning on traveling elsewhere in Africa during your trip then please consult your travel clinic.

Meals

3 meals a day will be provided by the project and prepared by the volunteers. The food is basic but tasty and filling. Please let us know in advance of any dietary requirements. The tap water is from a bore hole and is safe to drink.



There are regular trips to the local shops in Badplaas which you may be able to join by arrangement. There is a small supermarket, a pharmacy and ATMs. Specialised items may only be available in Nelspruit and branded items may be more expensive than at home so it's advisable to bring essentials with you. There is no WIFI at Project Wild but there is good 3G signal. You can buy a prepaid local sim card on arrival at the airport which you can top up with data to keep in touch with home.

A Day in the Life of a Volunteer

Although there is never an average day, there are certain daily tasks that must be done every day. 7am - Morning Feeding Routines for all animals at the centre. Bottles for any of the infant animals.

Baby shifts in the nursery start (in baby season).

8/9am Volunteer breakfast

9am - 12pm - Cleaning of sleep cages and of enclosures, changing of blankets in night cages. Projects such as food sorting after a food collection, enrichment, maintenance etc.

11.30am - Seeds for the rehab monkey troops

12pm-1pm - Lunch

1pm - 3pm - Continuation of projects

3pm - Afternoon feeding

6pm - All animals to bed for the night, evening bottles etc.

7pm - Dinner Depending on which animals are at the centre at the time there will be different bottles to be fed during the day at different intervals In baby season there will be nursery shifts and there may be different medication to give to different animals at different points during the day.



What to Pack

Torch - for walking around at night if you have to help with feeding nocturnal animals. They are out in the bush and there are no street lights.

Work Gloves - For building, maintenance, gardening projects.

Suitable Closed Toe Shoes - It is safer to wear closed shoes when working with the animals and for maintenance projects.

Sandals/Flip Flops - For off time

Work Clothes - Your clothes will get dirty, ruined, poed on etc!! Please do not bring your best! Rather bring things you are happy to leave behind. We do provide scrubs to wear over your own clothes if you prefer while working. Bring a waterproof jacket if you are coming in summer,

Clothes for Off Times - lightweight shorts, t shirts etc for days off or evenings. Please include jumpers, coats, hat and gloves if you are coming in winter.

Personal Toiletries - essentials are available in Badplaas but if you are set on a certain brand then its best to bring from home.

Suggested Swimming Costume - There is a pool at the lodge you are welcome to use



Camera - remember spare SD cards and power cables!

Sunhat/Suncream - The sun is very intense even during the winter.

Plug Adapter - Most universal kits do not contain a SA adapter

Dates and Rates

We receive no government support and the volunteer program is what keeps the project alive. The donation not only covers the cost of your food, accommodation and transport while at the project but also pays for the care of the animals you will be working with.

2 Weeks - €590

4 Weeks - €900

8 Weeks - €1700

12 Weeks - €2400

Whats Included: Accommodation in shared rooms, 3 Meals a day, 1 transfer to and from Nelspruit, Room cleaning twice a week, A 24/7 dedicated volunteer coordinator, Full training in all aspects of work

Whats Excluded: Flights and travel to Nelspruit, Travel Insurance, Any extra excursions/trips/souvenirs

Project Wild pick up volunteers every Monday (until 4pm) from the closest city, which is Nelspruit. If you are arriving early into Nelspruit then we can suggest a backpackers or sights not to be missed.



Volunteers are responsible for their own transport to South Africa and then on to Nelspruit where you will be collected by one of project team members on a Monday before 4pm.

Flying to South Africa The best airport to fly into is Johannesburg OR Tambo airport. You can check websites like skyscanner.net to compare prices and find the cheapest flights. Many airlines fly direct from Europe but it is often cheaper to fly via Dubai or central Africa.

Traveling to Nelspruit The cheapest and safest way to get to Nelspruit is on the Citybug shuttle bus or the Limetime shuttle bus which will pick you up directly from Johannesburg airport and drop you in Nelspruit.

The trip is about 4 hours and costs around R410 (about €28) one way. You can book your bus online at www.citybug.co.za or www.limetimeshuttle.co.za If you are spending time elsewhere in South Africa first then there are regular public buses from all major towns (usually transiting through Johannesburg central bus station - please be vigilant if using this bus station) such as City to City, Greyhound and Translux. If your bus or flight is delayed then please let us know asap so we can make alternative arrangements for your pick up.

If you are arriving into South Africa a few days earlier and need to stay overnight before your pick up then we recommend the following backpackers.

Johannesburg Blue Mango Lodge

Nelspruit Old Vic Travellers Inn

Get In touch to begin your adventure

Email: Send us an email info@ravia.co.za to ask us any questions or to book your project today. We Look Forward to Meeting You Soon

